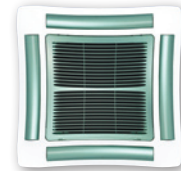
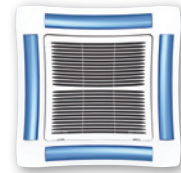


YHK Hydro Cassette

2 & 4 pipe system

A complete range from 1.3 kW to 11.1 kW



Coloured versions available as a option

Wired controls



BR
Remote three speeds controller

TR
BR + Electronic thermostat and Summer/Winter switch

ATR
Automatic TR



DTR
Digital Automatic Remote controller

TMO 503 SV2
Digital Automatic Remote controller to be mounted in the standard light wall box

DRC - DI
Centralized controller up to 60 terminals



Infrared control



Features

- Cooling duty from 1.3 to 11.1 kW
- YHKH: models with infrared control (standard)
- YHKY: models with wired control (accessory)
- 2 (-2) & 4 (-4) pipes systems in all range
- 2 sizes: 600 x 600 & 800 x 800
- Possible to choice between 6 fan speeds
- Condensate pump integrated in all range
- 2/3 way valves fitted or supplied loose in all range
- Coloured versions, possible to change the colour of the grid and the frame
- Possible to select a complete range of controls
- Electric heater fitted as an option for all range (2 pipe only)
- All metal parts insulated to avoid condensations



FX03 Terminal unit controller
BacNET and N2 Metasys network compatible (see page 103 for details)

YHK Hydro Cassette

1.3 to 11.1 kW



Technical features 2 pipe system

Model		YHK 20-2	YHK 25-2	YHK 40-2	YHK 50-2	YHK 65-2	YHK 95-2	YHK 110-2	
Cooling capacity	kW	1.3 / 1.6 / 2.0	1.8 / 2.3 / 2.7	2.3 / 3.3 / 4.3	2.9 / 3.9 / 5.0	4.2 / 4.9 / 6.2	5.3 / 6.8 / 9.5	5.3 / 8.5 / 11.1	
Sensible cooling capacity	kW	1.0 / 1.3 / 1.6	1.4 / 1.8 / 2.0	1.6 / 2.4 / 3.2	2.1 / 2.8 / 3.7	3.0 / 3.6 / 4.6	3.5 / 4.5 / 6.5	3.7 / 6.1 / 8.3	
Heating capacity	kW	1.6 / 2.1 / 2.6	2.2 / 2.9 / 3.4	2.6 / 3.9 / 5.2	3.4 / 4.6 / 6.2	5.1 / 6.0 / 7.8	5.6 / 7.3 / 10.7	6.1 / 10.3 / 14.0	
Power supply	V/Ph/Hz	230 / 1 / 50 + E							
Airflow	m ³ /h	310 / 420 / 610	310 / 420 / 520	320 / 500 / 710	430 / 610 / 880	630 / 820 / 1140	710 / 970 / 1500	710 / 1280 / 1820	
Fan	W	25 / 32 / 57	25 / 32 / 44	25 / 44 / 68	32 / 57 / 90	33 / 48 / 77	42 / 63 / 120	42 / 95 / 170	
	A	0.11 / 0.15 / 0.27	0.11 / 0.15 / 0.20	0.11 / 0.20 / 0.32	0.15 / 0.27 / 0.45	0.15 / 0.23 / 0.36	0.18 / 0.28 / 0.53	0.18 / 0.42 / 0.74	
Water flow	l/h	219 / 280 / 340	316 / 402 / 461	387 / 574 / 745	506 / 667 / 863	724 / 845 / 1060	913 / 1166 / 1636	913 / 1453 / 1909	
Water content	l	0.8	1.4	2.1	2.1	3.0	4.0	4.0	
Pressure drop in cooling	kPa	4.5 / 7.0 / 10.0	4.9 / 7.6 / 9.7	4.6 / 9.4 / 15.1	7.5 / 12.4 / 19.7	10.9 / 14.3 / 21.6	9.4 / 14.7 / 26.9	9.4 / 21.8 / 35.6	
Pressure drop in heating	kPa	4.0 / 6.0 / 9.0	4.1 / 6.3 / 8.2	3.5 / 7.3 / 11.4	6.7 / 11.2 / 17.7	6.7 / 9.9 / 15.1	7.9 / 12.4 / 23.0	7.9 / 18.6 / 30.6	
Sound power level	dB(A)	33 / 40 / 49	33 / 40 / 45	33 / 45 / 53	41 / 49 / 59	33 / 40 / 48	34 / 40 / 53	34 / 48 / 58	
Sound pressure level *	dB(A)	24 / 31 / 40	24 / 31 / 36	24 / 36 / 44	32 / 40 / 50	24 / 31 / 39	25 / 31 / 44	25 / 39 / 49	
Dimensions (H x W x D)	mm	275 x 575 x 575					303 x 820 x 820		
Panel (W x D)	mm	670 x 670					965 x 965		
Packed unit net weight	kg	28	28	30	30	44	47	47	

* The sound pressure levels are 9 dB(A) lower than the sound power levels and apply to the reverberant field of a 100 m³ room and a reverberation time of 0.5 sec.
 Cooling capacities based on 7/12°C EWT - Indoor temperature 27°C DB / 19°C WB
 Heating capacities based on 50°C EWT at nominal flow rate Indoor temperature 20°C
 Water flow rate as for the cooling conditions.
 All data are in equivalent to Low / Medium / High speed.

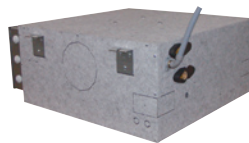
Technical features 4 pipe system

Model		YHK 20-4	YHK 25-4	YHK 40-4	YHK 50-4	YHK 65-4	YHK 95-4	YHK 110-4	
Cooling capacity	kW	1.5 / 2.0 / 2.3	1.9 / 2.4 / 2.7	1.9 / 2.7 / 3.3	2.4 / 3.0 / 3.8	4.1 / 5.0 / 6.3	4.5 / 5.7 / 7.7	4.5 / 6.9 / 8.9	
Sensible cooling capacity	kW	1.2 / 1.6 / 1.9	1.4 / 1.7 / 2.0	1.3 / 2.0 / 2.6	1.8 / 2.3 / 3.0	3.0 / 3.7 / 4.7	3.3 / 4.2 / 5.8	3.3 / 5.2 / 6.8	
Heating capacity	kW	2.0 / 2.5 / 3.0	2.4 / 3.0 / 3.5	2.4 / 3.5 / 4.4	3.1 / 4.0 / 5.0	5.9 / 7.2 / 9.1	6.5 / 8.1 / 11.0	6.5 / 10.0 / 12.7	
Power supply	V/Ph/Hz	230 / 1 / 50 + E							
Airflow	m ³ /h	310 / 420 / 610	310 / 420 / 520	320 / 500 / 710	430 / 610 / 880	630 / 820 / 1140	710 / 970 / 1500	710 / 1280 / 1820	
Fan	W	25 / 32 / 57	25 / 32 / 44	25 / 44 / 68	32 / 57 / 90	33 / 48 / 77	42 / 63 / 120	42 / 95 / 170	
	A	0.11 / 0.15 / 0.27	0.11 / 0.15 / 0.20	0.11 / 0.20 / 0.32	0.15 / 0.27 / 0.45	0.15 / 0.23 / 0.36	0.18 / 0.28 / 0.53	0.18 / 0.42 / 0.74	
Water flow in cooling	l/h	260 / 337 / 401	318 / 406 / 464	318 / 456 / 574	406 / 519 / 655	712 / 865 / 1090	777 / 974 / 1326	777 / 1192 / 1529	
Water flow in heating	l/h	169 / 219 / 261	209 / 260 / 298	209 / 298 / 378	267 / 341 / 426	508 / 618 / 783	555 / 697 / 946	555 / 858 / 1092	
Water content Cooling / Heating	l	1 / 0.6	1.4 / 0.7	1.4 / 0.7	1.4 / 0.7	3.0 / 1.4	3.0 / 1.4	3.0 / 1.4	
Pressure drop in cooling	kPa	6.0 / 10.0 / 13.5	4.6 / 6.9 / 8.8	4.6 / 8.8 / 13.4	7.2 / 11.2 / 17.0	8.8 / 12.5 / 18.9	10.3 / 15.4 / 26.9	10.3 / 22.1 / 34.7	
Pressure drop in heating	kPa	6.5 / 10.5 / 14.5	5.7 / 8.5 / 10.8	5.7 / 10.8 / 16.6	8.8 / 13.8 / 20.5	9.8 / 14.0 / 21.4	11.5 / 17.4 / 29.9	11.5 / 25.3 / 38.8	
Sound power level	dB(A)	33 / 40 / 49	33 / 40 / 45	33 / 45 / 53	41 / 49 / 59	33 / 40 / 48	34 / 40 / 53	34 / 48 / 58	
Sound pressure level *	dB(A)	24 / 31 / 40	24 / 31 / 36	24 / 36 / 44	32 / 40 / 50	24 / 31 / 39	25 / 31 / 44	25 / 39 / 49	
Dimensions (H x W x D)	mm	275 x 575 x 575					303 x 820 x 820		
Panel (W x D)	mm	670 x 670					965 x 965		
Packed unit net weight	kg	30	30	30	30	47	47	47	

* The sound pressure levels are 9 dB(A) lower than the sound power levels and apply to the reverberant field of a 100 m³ room and a reverberation time of 0.5 sec.
 Cooling capacities based on 7/12°C EWT - Indoor temperature 27°C DB / 19°C WB
 Heating capacities based on 70/60°C EWT - Indoor temperature 20°C
 All data are in equivalent to Low / Medium / High speed.



Condensate pump integrated in all sizes



Metal parts insulated to avoid condensation



2 or 3 way valves fitted or supplied loose in all sizes



Outer casing as an option to integrate the water cassette into any environment



Options & Accessories

Compatibility table / Codes

Model (Panel not included)	YHK 20	YHK 25	YHK 40	YHK 50	YHK 65	YHK 95	YHK 110	
Cassette YHKY	2 pipe system	0079100K	0079000K	0079001K	0079002K	0079003K	0079004K	0079005K
	4 pipe system	0079110K	0079010K	0079011K	0079012K	0079013K	0079014K	0079015K
Cassette YHKH - with infrared remote control included	2 pipe system	0079140K	0079040K	0079041K	0079042K	0079043K	0079044K	0079045K
	4 pipe system	0079150K	0079050K	0079051K	0079052K	0079053K	0079054K	0079055K
Cassette YHKY-ECM - basic model	2 pipe system	-	0079801K	0079802K	0079803K	0079804K	0079805K	-
	4 pipe system	-	0079811K	0079812K	0079813K	0079814K	0079815K	-
Cassette YHKH-ECM - basic model	2 pipe system	-	0079821K	0079822K	0079823K	0079824K	0079825K	-
	4 pipe system	-	0079831K	0079832K	0079833K	0079834K	0079835K	-

Options (Factory fitted)

Cassette YHKY-E - with electric resistance

Version without infrared remote control YHKY-E	2 pipe system	-	0079060K	0079061K	0079062K	0079063K	0079064K	0079065K
Version with infrared remote control included YHKH-E	2 pipe system	-	0079080K	0079081K	0079082K	0079083K	0079084K	0079085K

Cassette YHKY-REB - with remote electric board

Cassette YHKY-REB	2 pipe system	0079120K	0079020K	0079021K	0079022K	0079023K	0079024K	0079025K
	4 pipe system	0079130K	0079030K	0079031K	0079032K	0079033K	0079034K	0079035K

Valves

3 way valve + mounting kit for 2 pipe models (factory fitted)	9079510		•				-
	9079511		-				•
3 way valve + mounting kit for 4 pipe models (factory fitted)	9079512		•				-
	9079513		-				•

Accessories (supplied loose)

Air diffusers / Panels

Air diffuser - intake grid, frame and louvres in RAL 9003 white colour	AKPA 600		•				-
	AKPA 800		-				•
Air diffuser - other colours (*)					Contact Johnson Controls		

Valves (220V On/Off)

3 way valve + mounting kit for 2 pipe models (not fitted)	9079500		•				-
	9079501		-				•
3 way valve + mounting kit for 4 pipe models (not fitted)	9079502		•				-
	9079503		-				•
2 way valve + mounting kit for 2 pipe models (not fitted)	9079505		•				-
	9079506		-				•
2 way valve + mounting kit for 4 pipe models (not fitted)	9079507		•				-
	9079508		-				•
3 way valve + mounting kit for units with outer casing OCA (not fitted)	9079155		•				-
3 way valve + mounting kit for units with outer casing OCA (not fitted)	9079156		-				•

Other type of valves

Other valves					Contact Johnson Controls		
--------------	--	--	--	--	--------------------------	--	--

Other Accessories

Outer casing	OCA 600		•				-
	OCA 800		-				•
Fresh air duct	FAD				•		
Fresh air kit 1 way for units with outer casing OCA	FAK 600		•				-
Fresh air kit 1 way for units with outer casing OCA	FAK 800		-				•

CONTROLS for YHKY versions

Remote three speed control BR	9060540				•		
Remote three speed control + electronic thermostat and S/W switch TR	9060541				•		
Automatic speed control with electronic thermostat and S/W - ATR	9060542				•		
Automatic speed control with electronic thermostat to be mounted in the light wall box TMO-503-SV2	9060172				•		
Receiver REC-S	9079110				•		
Automatic remote control with electronic thermostat, S/W switch and liquid crystal display DTR	9060521				•		
Receiver (slave) for control DTR RECD	9060139				•		
Change over CH 15-25	9053049				•		
Low temperature cut out thermostat TME	3021091				•		

CONTROLS for YHKH versions

Digital remote control up to 60 multifunction units DRC-DI	9079102				•		
Change over for infrared remote control CH T2	9079103				•		

CONTROLS only for YHK-ECM version

Digital remote control up to 60 multifunction units DRC-DI	9079102				•		
ETM-ECM control	3021232				•		
RT03/ECM infrared remote control	9079220				•		

Maxinet management system for a network of cassette fan coil

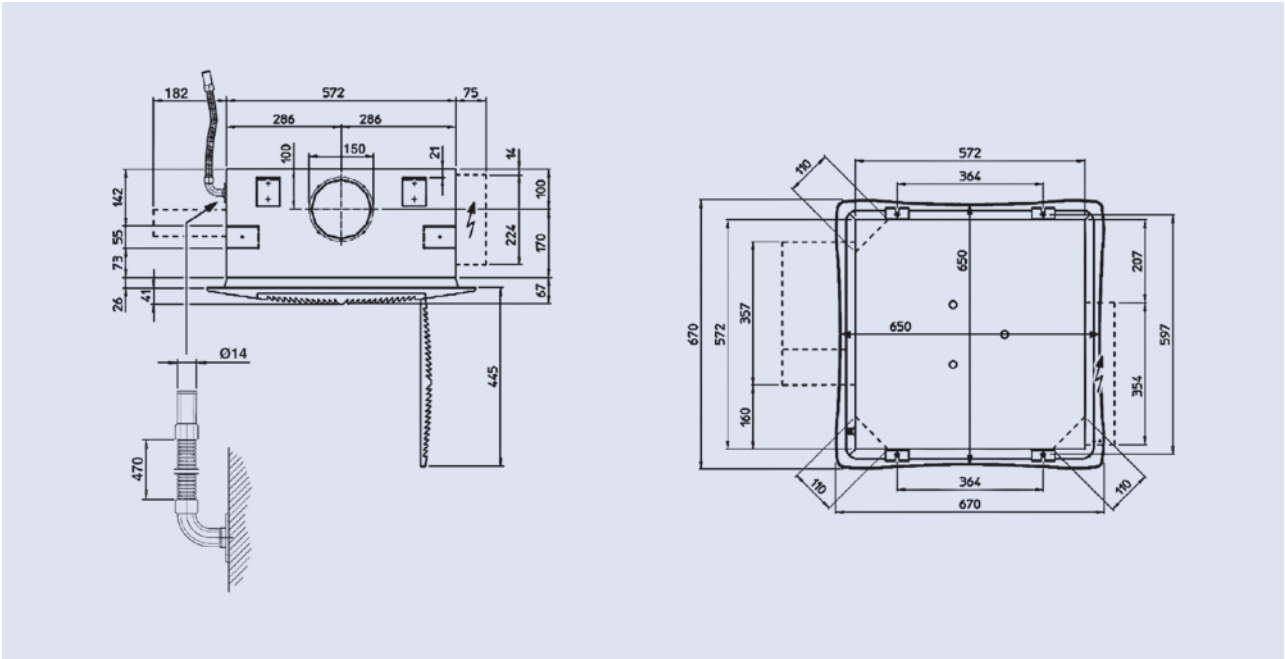
Maxinet	9079104				•		
Board 8 relays for Maxinet	9079105				•		

(*) Minimum order quantity : 20 units

Dimensions

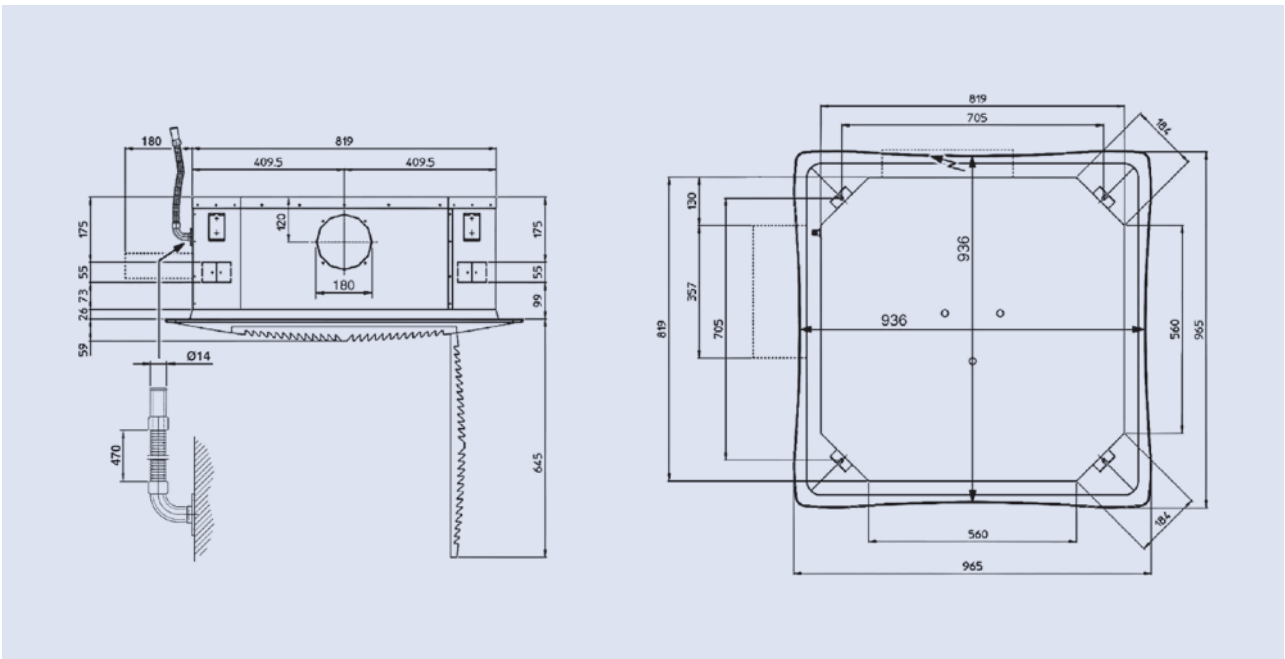


YHK 20/25/40/50-2 / YHK 20/25/40/50-4 (Version 600x600)



All dimensions in mm. Drawings not a scale.

YHK 65/95/110-2 / YHK 65/95/110-4 (Version 800x800)



All dimensions in mm. Drawings not a scale.