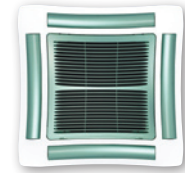


YHK ECM Inverter Hydro Cassette

2 & 4 pipe system

A complete range from 1.8 kW to 10.8 kW



Coloured versions available as an option

Wired control



ETN-ECM

Wall-mounted controller that can be connected that allows the inverter control with a 0-10V signal. The same controller can be connected to one or several cassettes (master-slave function).



Infrared control



Features

- Cooling duty from 1.8 to 10.8 kW
- YHKH: models with infrared control (standard)
- YHKY: models with wired control (accessory)
- 2 (-2) & 4 (-4 or -6) pipes systems
- 2 sizes: 600 x 600 & 800 x 800
- Condensate pump integrated in all range
- 2/3 way valves fitted or supplied loose in all range
- Coloured versions, possible to change the colour of the grid and the frame
- All metal parts insulated to avoid condensations
- Inverter fan motor for a very quiet operation
- Electrical consumption reduced by up to 75%
- Specific range of controllers with master-slave function



FX03 Terminal unit controller

BacNET and N2 Metasys network compatible (see page 103 for details)

YHK ECM Inverter Hydro Cassette

1.8 to 10.8 kW



Technical features 2 pipe system

Model		YHK-ECM 25-2	YHK-ECM 40-2	YHK-ECM 50-2	YHK-ECM 65-2	YHK-ECM 95-2
Cooling capacity	kW	1.8 / 2.2 / 2.8	2.2 / 3.1 / 4.3	2.6 / 3.9 / 5.0	4.2 / 5.2 / 6.3	5.3 / 7.7 / 10.8
Sensible cooling capacity	kW	1.4 / 1.6 / 2.1	1.6 / 2.2 / 3.2	1.8 / 2.8 / 3.7	3.0 / 3.8 / 4.7	3.7 / 5.5 / 7.9
Heating capacity	kW	2.2 / 2.7 / 3.4	2.6 / 3.6 / 5.2	3.0 / 4.6 / 6.2	5.1 / 6.4 / 8.0	5.9 / 8.8 / 12.7
Power supply	V/Ph/Hz	230 / 1 / 50 + E				
Airflow	m³/h	310 / 380 / 535	310 / 445 / 710	360 / 610 / 880	630 / 870 / 1165	710 / 1130 / 1770
Fan	W	5 / 8 / 16	5 / 11 / 31	7 / 21 / 62	10 / 17 / 33	10 / 32 / 108
Water flow	l/h	317 / 373 / 473	385 / 524 / 744	441 / 666 / 864	723 / 885 / 1089	909 / 1328 / 1848
Water content	l	1.4	2.1	2.1	3.0	4.0
Pressure drop in cooling	kPa	4.9 / 6.6 / 10.1	4.6 / 9.4 / 15.1	5.9 / 12.4 / 19.7	10.9 / 15.6 / 22.7	9.4 / 18.5 / 33.6
Pressure drop in heating	kPa	4.0 / 5.5 / 8.7	3.6 / 6.6 / 13.1	4.7 / 10.5 / 17.7	8.7 / 12.8 / 19.5	7.2 / 14.9 / 28.8
Sound power level	dB(A)	33 / 39 / 47	33 / 43 / 54	37 / 50 / 60	33 / 39 / 48	34 / 47 / 57
Sound pressure level *	dB(A)	24 / 30 / 38	24 / 34 / 45	28 / 41 / 51	24 / 30 / 39	25 / 38 / 48
Dimensions (H x W x D)	mm	275 x 575 x 575			303 x 820 x 820	
Panel (W x D)	mm	670 x 670			965 x 965	
Packed unit net weight	kg	28	30	30	44	47

* The sound pressure levels are 9 dB(A) lower than the sound power levels and apply to the reverberant field of a 100 m³ room and a reverberation time of 0.5 sec.
 Cooling capacities based on 7/12°C EWT - Indoor temperature 27°C DB / 19°C WB
 Heating capacities based on 50°C EWT at nominal flow rate Indoor temperature 20°C
 Water flow rate as for the cooling conditions.
 All data are in equivalent to Low / Medium / High speed.

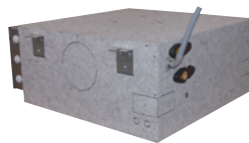
Technical features 4 pipe system

Model		YHK-ECM 25-4	YHK-ECM 40-6	YHK-ECM 50-6	YHK-ECM 65-4	YHK-ECM 95-6
Cooling capacity	kW	1.9 / 2.2 / 2.8	2.1 / 2.8 / 3.9	2.4 / 3.5 / 4.5	4.3 / 5.3 / 6.5	5.0 / 7.2 / 9.9
Sensible cooling capacity	kW	1.3 / 1.6 / 2.1	1.5 / 2.0 / 3.0	1.7 / 2.6 / 3.5	3.1 / 3.8 / 4.8	3.5 / 5.2 / 7.4
Heating capacity	kW	2.4 / 2.9 / 3.6	2.0 / 2.5 / 3.4	2.2 / 3.1 / 3.8	6.1 / 7.5 / 9.4	5.2 / 7.2 / 9.5
Power supply	V/Ph/Hz	230 / 1 / 50 + E				
Airflow	m³/h	310 / 380 / 535	310 / 445 / 710	360 / 610 / 880	630 / 870 / 1165	710 / 1130 / 1770
Fan	W	5 / 8 / 16	5 / 11 / 31	7 / 21 / 62	10 / 17 / 33	10 / 32 / 108
Water flow in cooling	l/h	318 / 375 / 476	359 / 483 / 676	409 / 608 / 779	740 / 908 / 1120	856 / 1233 / 1697
Water flow in heating	l/h	209 / 245 / 311	170 / 217 / 288	189 / 263 / 326	528 / 649 / 805	449 / 616 / 818
Water content Cooling / Heating	l	1.4 / 0.7	1.7 / 0.5	1.7 / 0.5	3.0 / 1.4	3.6 / 1.1
Pressure drop in cooling	kPa	4.6 / 6.2 / 9.5	3.5 / 5.7 / 10.5	4.1 / 8.4 / 13.1	9.4 / 13.6 / 19.8	8.8 / 17.0 / 30.1
Pressure drop in heating	kPa	5.7 / 7.6 / 11.7	3.5 / 5.5 / 9.0	4.5 / 7.5 / 11.0	10.5 / 15.5 / 22.5	6.5 / 11.0 / 18.0
Sound power level	dB(A)	33 / 39 / 47	33 / 43 / 54	37 / 50 / 60	33 / 39 / 48	34 / 47 / 57
Sound pressure level *	dB(A)	24 / 30 / 38	24 / 34 / 45	28 / 41 / 51	24 / 30 / 39	25 / 38 / 48
Dimensions (H x W x D)	mm	275 x 575 x 575			303 x 820 x 820	
Panel (W x D)	mm	670 x 670			965 x 965	
Packed unit net weight	kg	30	30	30	47	47

* The sound pressure levels are 9 dB(A) lower than the sound power levels and apply to the reverberant field of a 100 m³ room and a reverberation time of 0.5 sec.
 Cooling capacities based on 7/12°C EWT - Indoor temperature 27°C DB / 19°C WB
 Heating capacities based on 70/60°C EWT - Indoor temperature 20°C
 All data are in equivalent to Low / Medium / High speed.



Condensate pump integrated in all sizes



Metal parts insulated to avoid condensation



2 or 3 way valves fitted or supplied loose in all sizes



Outer casing as an option to integrate the water cassette into any environment



Options & Accessories

Compatibility table / Codes

Model (Panel not included)	YHK 20	YHK 25	YHK 40	YHK 50	YHK 65	YHK 95	YHK 110	
Cassette YHKY	2 pipe system	0079100K	0079000K	0079001K	0079002K	0079003K	0079004K	0079005K
	4 pipe system	0079110K	0079010K	0079011K	0079012K	0079013K	0079014K	0079015K
Cassette YHKH - with infrared remote control included	2 pipe system	0079140K	0079040K	0079041K	0079042K	0079043K	0079044K	0079045K
	4 pipe system	0079150K	0079050K	0079051K	0079052K	0079053K	0079054K	0079055K
Cassette YHKY-ECM - basic model	2 pipe system	-	0079801K	0079802K	0079803K	0079804K	0079805K	-
	4 pipe system	-	0079811K	0079812K	0079813K	0079814K	0079815K	-
Cassette YHKH-ECM - basic model	2 pipe system	-	0079821K	0079822K	0079823K	0079824K	0079825K	-
	4 pipe system	-	0079831K	0079832K	0079833K	0079834K	0079835K	-

Options (Factory fitted)

Cassette YHKY-E - with electric resistance

Version without infrared remote control YHKY-E	2 pipe system	-	0079060K	0079061K	0079062K	0079063K	0079064K	0079065K
Version with infrared remote control included YHKH-E	2 pipe system	-	0079080K	0079081K	0079082K	0079083K	0079084K	0079085K

Cassette YHKY-REB - with remote electric board

Cassette YHKY-REB	2 pipe system	0079120K	0079020K	0079021K	0079022K	0079023K	0079024K	0079025K
	4 pipe system	0079130K	0079030K	0079031K	0079032K	0079033K	0079034K	0079035K

Valves

3 way valve + mounting kit for 2 pipe models (factory fitted)	9079510		•				-
	9079511		-				•
3 way valve + mounting kit for 4 pipe models (factory fitted)	9079512		•				-
	9079513		-				•

Accessories (supplied loose)

Air diffusers / Panels

Air diffuser - intake grid, frame and louvres in RAL 9003 white colour	AKPA 600		•				-
	AKPA 800		-				•
Air diffuser - other colours (*)					Contact Johnson Controls		

Valves (220V On/Off)

3 way valve + mounting kit for 2 pipe models (not fitted)	9079500		•				-
	9079501		-				•
3 way valve + mounting kit for 4 pipe models (not fitted)	9079502		•				-
	9079503		-				•
2 way valve + mounting kit for 2 pipe models (not fitted)	9079505		•				-
	9079506		-				•
2 way valve + mounting kit for 4 pipe models (not fitted)	9079507		•				-
	9079508		-				•
3 way valve + mounting kit for units with outer casing OCA (not fitted)	9079155		•				-
3 way valve + mounting kit for units with outer casing OCA (not fitted)	9079156		-				•

Other type of valves

Other valves					Contact Johnson Controls		
--------------	--	--	--	--	--------------------------	--	--

Other Accessories

Outer casing	OCA 600		•				-
	OCA 800		-				•
Fresh air duct	FAD				•		
Fresh air kit 1 way for units with outer casing OCA	FAK 600		•				-
Fresh air kit 1 way for units with outer casing OCA	FAK 800		-				•

CONTROLS for YHKY versions

Remote three speed control BR	9060540				•		
Remote three speed control + electronic thermostat and S/W switch TR	9060541				•		
Automatic speed control with electronic thermostat and S/W - ATR	9060542				•		
Automatic speed control with electronic thermostat to be mounted in the light wall box TMO-503-SV2	9060172				•		
Receiver REC-S	9079110				•		
Automatic remote control with electronic thermostat, S/W switch and liquid crystal display DTR	9060521				•		
Receiver (slave) for control DTR RECD	9060139				•		
Change over CH 15-25	9053049				•		
Low temperature cut out thermostat TME	3021091				•		

CONTROLS for YHKH versions

Digital remote control up to 60 multifunction units DRC-DI	9079102				•		
Change over for infrared remote control CH T2	9079103				•		

CONTROLS only for YHK-ECM version

Digital remote control up to 60 multifunction units DRC-DI	9079102				•		
ETM-ECM control	3021232				•		
RT03/ECM infrared remote control	9079220				•		

Maxinet management system for a network of cassette fan coil

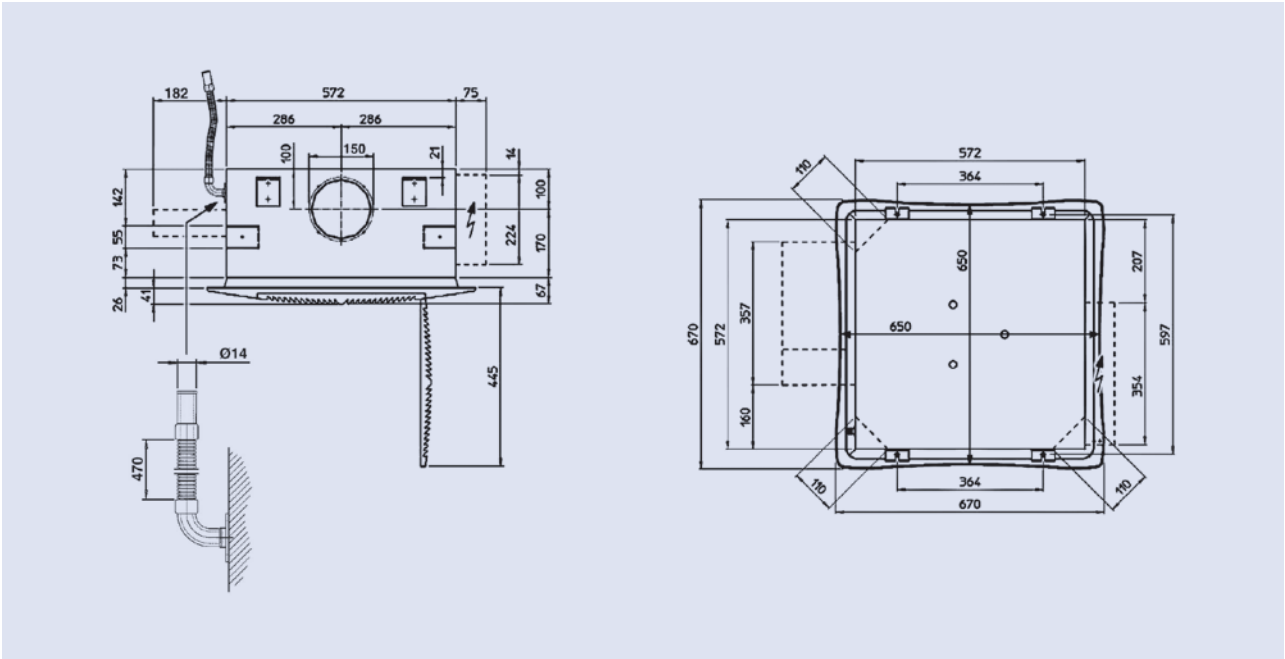
Maxinet	9079104				•		
Board 8 relays for Maxinet	9079105				•		

(*) Minimum order quantity : 20 units

Dimensions

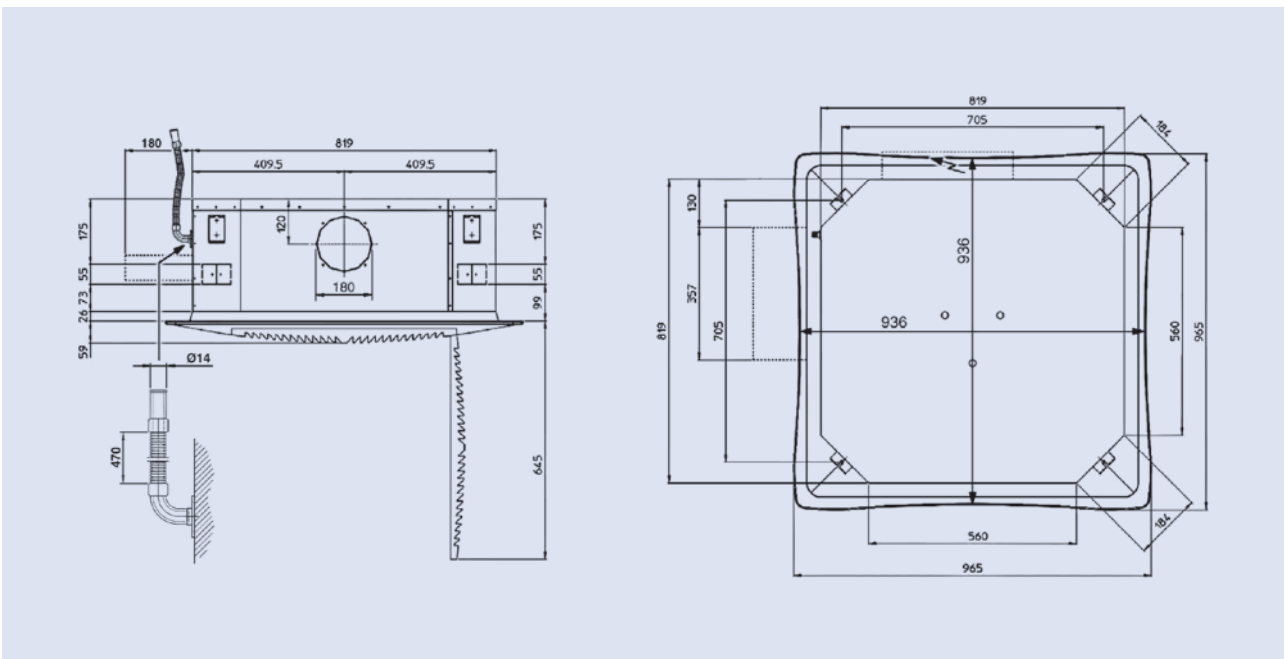


YHK-ECM 25/40/50-2 / YHK-ECM 25-4 / 40/50-6. (Version 600x600)



All dimensions in mm. Drawings not a scale.

YHK-ECM 65/95-2 / YHK-ECM 65-4 / 95-6. (Version 800x800)



All dimensions in mm. Drawings not a scale.