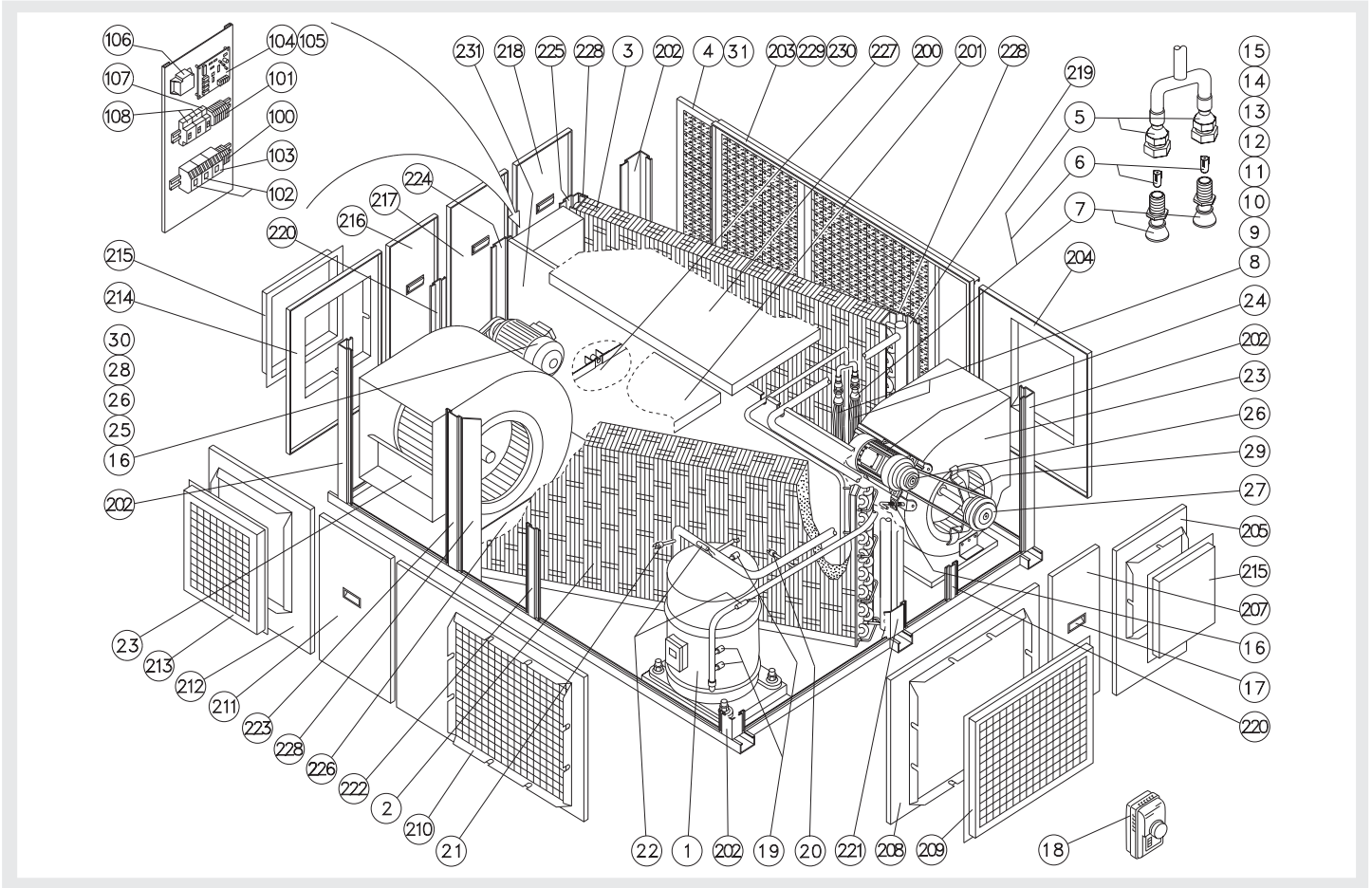


Spare Parts

RTC-30B-38 ed.01 (10-00) R-22 (SERIAL B)



1/2



POS	ITEM	DENOMINATION	QUANTITY
			RTC-30B-38 ed.01
1	3721806	Compressor	1
2	61-7101	Condenser coil	1
3	61-7078	Evaporator coil	1
4	3737736	Air filter 695 x 410 x 25	2
5	3532001	Aeroquip connector	2
6	3520018	Restrictor	2
7	3530005	Distributor	2
8	86-9063	Capillary tube n° 1	1
9	86-9064	Capillary tube n° 2	1
10	86-9065	Capillary tube n° 3	1
11	86-9066	Capillary tube n° 4	1
12	86-9067	Capillary tube n° 5	1
13	86-9068	Capillary tube n° 6	1
14	86-9069	Capillary tube n° 7	1
15	86-9070	Capillary tube n° 8	1
16	3778546	Fan motor support	2
17	3787101	Handle for handling	5
18	3786024	Ambient thermostat	1
19	3515630	Access connection	3
20	025-17620-025	High pressure switch	1
21	025-30249-000	Low pressure switch	1
22	3785064	3500 mm Sensor	2
23	3795052	Centrifugal fan	2
24	6792525	Fan motor	1
25	6792530	Fan motor	1
26	3761031	Speed varying pulley	1
27	3761076	Fan pulley	1
28	3761027	Fan pulley	1
29	4918099	Fan belt	1
30	4918098	Fan belt	1
31	3750800	Filtering material	2
100	3770994	Connecting strip	1
101	3770996	Connecting strip	1
102	6744617	Contacteur	2
103	6744652	Contacteur	1

Spare Parts

2/2 RTC-30B-38 ed.01 (10-00) R-22 (SERIAL B)

POS	ITEM	DENOMINATION	QUANTITY
			RTC-30B-38 ed.01
104	6791200	Electronic board	1
105	6826810	Nylon separator	4
106	6849855	Transformer	1
107	6776814	Automatic switch	1
108	6776702	Main switch	2
200	66-7106	Upper cover assembly	1
201	66-7107	Upper cover assembly	1
202	66-6929	Corner assembly	4
203	62-7191	Filter frame panel assembly	1
204	66-7194	Indoor fan panel cover	1
205	66-7108	Indoor fan panel cover	1
206	11-6905	Drainpipe protection	1
207	66-7192	Indoor motor panel assembly	1
208	66-7113	Outdoor coil panel assembly	1
209	66-7116	Air intake cover assembly	1
210	66-7112	Outdoor coil panel assembly	1
211	66-7121	Intermediate pannel	1
212	66-7111	Outdoor fan panel cover	1
213	17-10790	Fan air discharge panel	1
214	66-7110	Outdoor fan panel cover	1
215	66-7164	Outdoor fan grid cover assembly	2
216	66-7122	Outdoor motor panel assembly	1
217	66-6918	Control box panel	1
218	66-7109	Indoor coil panel assembly	1
219	66-7193	Indoor coil fan post assembly	1
220	66-6930	Motor plate post assembly	2
221	66-7166	Middle post assembly and outdoor coil	1
222	66-6987	Control box post assembly	1
223	66-7114	Fan post assembly and outdoor coil	1
224	66-7574	Control box post assembly	1
225	66-7115	Indoor coil control box post assembly	1
226	63-7100	Outdoor coil drain pan	1
227	63-7099	Indoor coil drain pan	1
228	17-10287	Coil bracket	3
229	17-10325	Upper filter guide	1
230	17-10326	Indoor filter guide	1
231	66-7605	Middle plate assembly	1